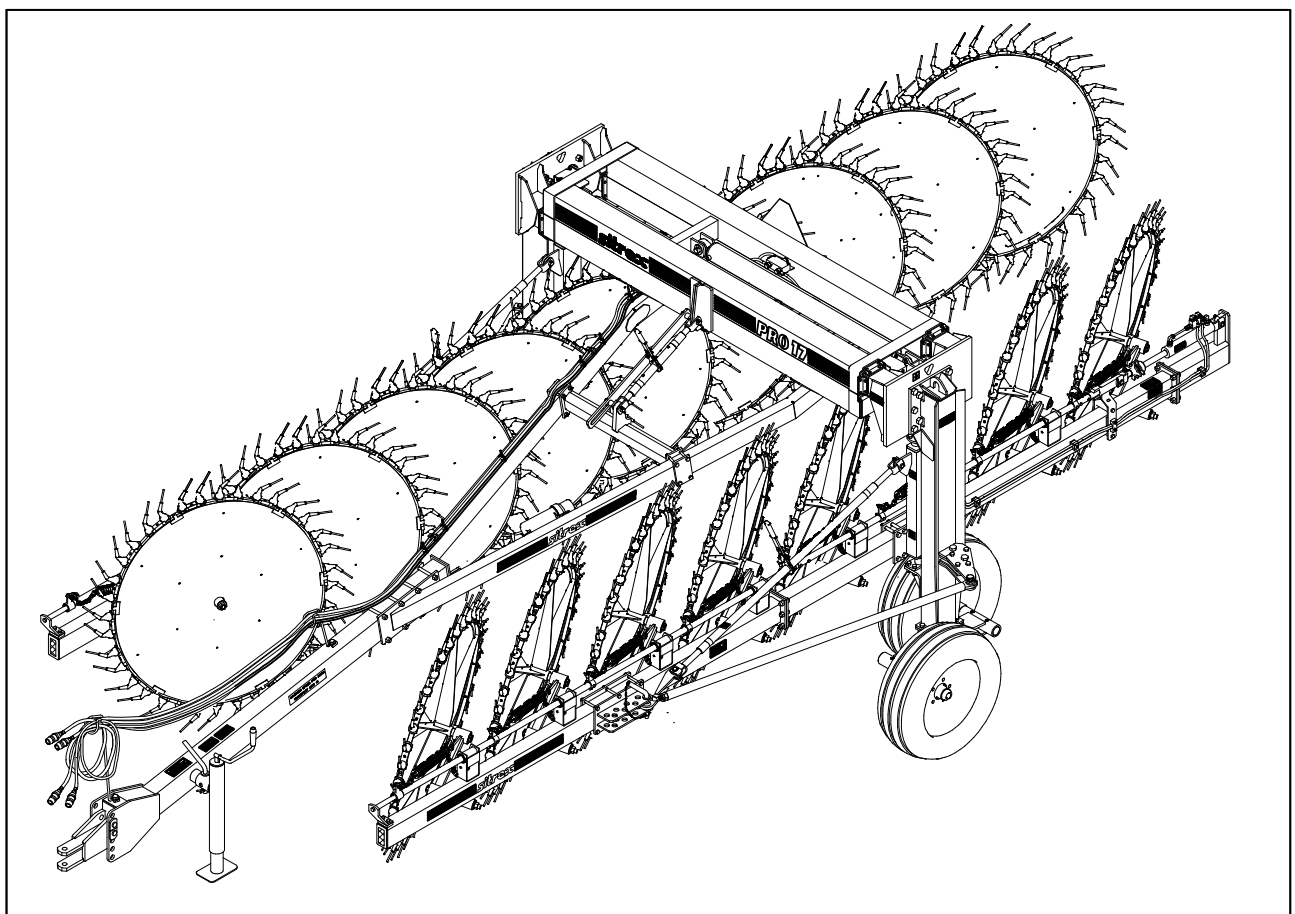


AGRICULTURAL MACHINERY

sitrex®
Spa

SPARE PARTS LIST



PRO SERIES 17 WHEELS

10-2015 (MANUAL OPENING – four hoses)

TABLE PART NO 920.406

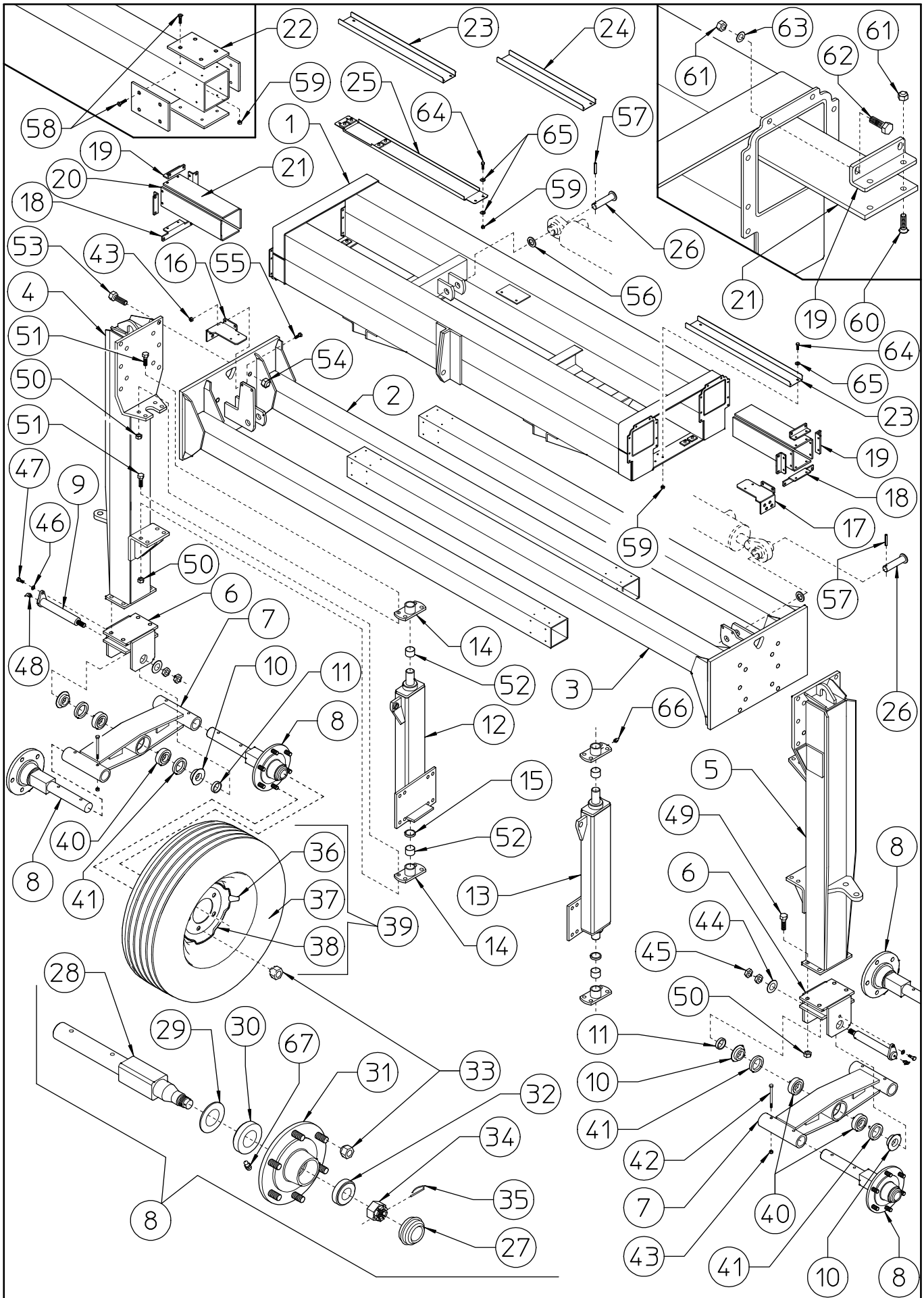


TABLE PART NO 920.406				
ITEM	Q.ty	PART NO	DESCRIPTION	NOTE
1	1	230.527	CROSSPIECE	
2	1	230.528	RH CROSSPIECE	
3	1	230.529	LH CROSSPIECE	
4	1	250.828	RH WHEEL SUPPORT	
5	1	250.829	LH WHEEL SUPPORT	
6	2	230.556	SUPPORT	
7	2	230.557	SUPPORT	
8	4	230.554	HUB ASSY	
9	2	230.603	PIN ø45	
10	4	230.560	BUSH	
11	2	230.561	SHIM	
12	1	230.975	RH SUPPORT	
13	1	230.976	LH SUPPORT	
14	4	230.562	SUPPORT	
15	2	230.575	SHIM	
16	1	230.748	RH HOSE SUPPORT	
17	1	230.749	LH HOSE SUPPORT	
18	4	230.537	SUPPORT	
19	12	230.536	SUPPORT	
20	2	230.622	SLIDING	
21	14	230.538	SLIDING	
22	16	230.539	SLIDING	
23	2	230.534	SUPPORT	
24	2	230.619	SUPPORT	
25	1	230.535	SUPPORT	
26	4	230.604	PIN ø30	
27	4	630.449	CAP	
28	4	230.555	PIN	
29	4	630.446	DUST COVER	
30	4	630.445	BEARING 30210	
31	4	230.558	HUB	
32	4	630.444	BEARING 30207	
33	24	620.300	NUT M18x1,5	
34	4	630.447	NUT M30x1,5 UNI 5594	

TABLE PART NO 920.406

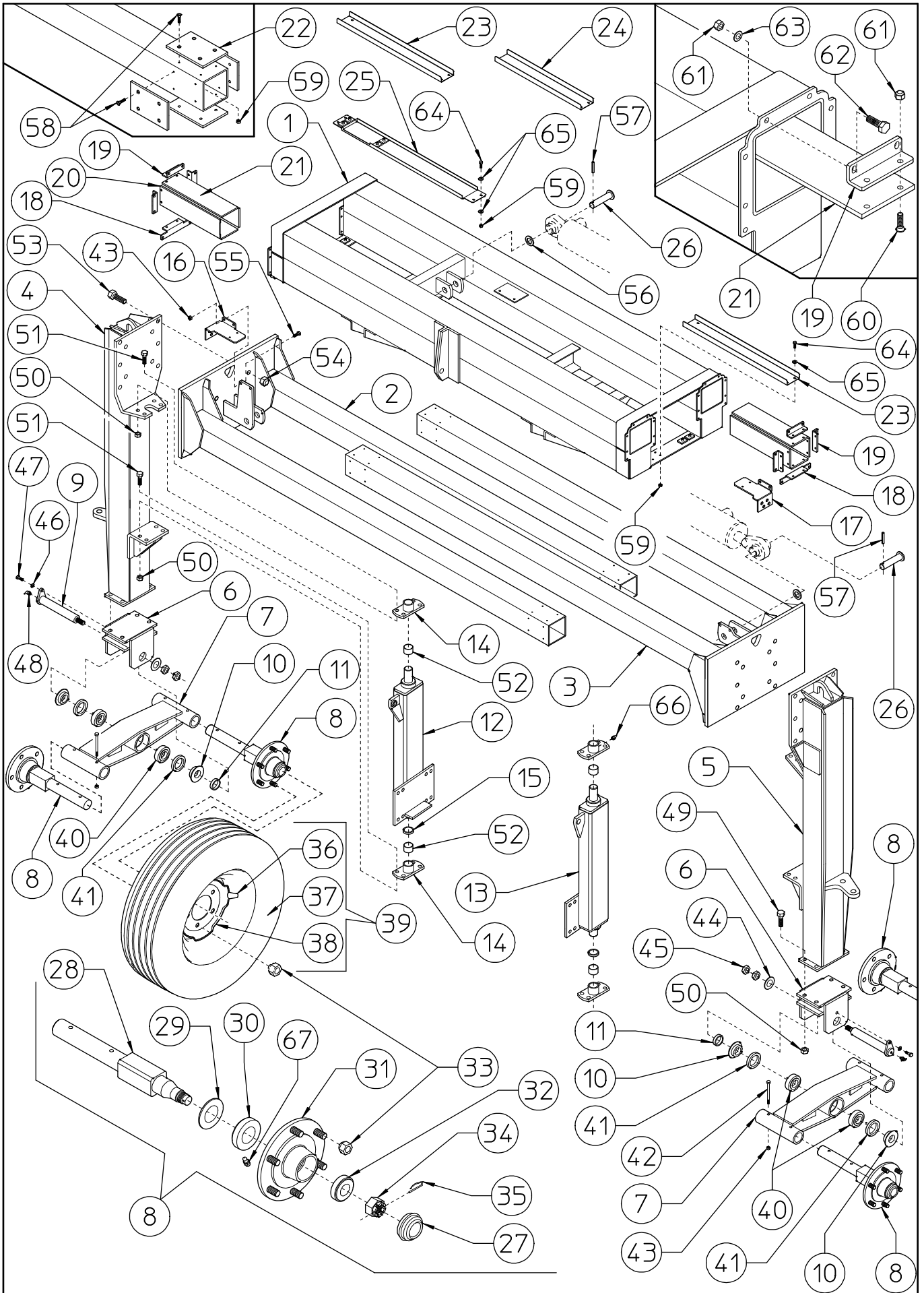


TABLE PART NO 920.406				
35	4	600.291	SPLIT PIN $\varnothing 3$	
36	4	630.590	VALVE	
37	4	630.588	TIRE 9.5 L-15 8PR	
38	4	630.589	RIM 7Wx15 F6	
39	4	630.587	COMPLETE WHEEL 9.5 L-15 TL 8PR	
40	4	630.450	BEARING 30209A	
41	4	620.951	SEAL $\varnothing 55-85 \times 10$	
42	8	630.485	SCREW M10x70 DIN 912	
43	12	600.029	NUT M10 DIN 980	
44	2	610.522	WASHER $\varnothing 34-60 \times 5$ DIN 125A	
45	4	610.933	NUT M33 DIN 936	
46	2	600.089	WASHER $\varnothing 13$ DIN 125A	
47	2	600.770	SCREW M12x20 DIN 933	
48	2	610.808	GREASE NIPPLE M8-90°	
49	8	610.167	SCREW M16x45 DIN 933	
50	24	600.080	NUT M16 DIN 980	
51	16	600.384	SCREW M16x50 DIN 933	
52	4	630.451	BUSH $\varnothing 40-44 \times 30$	
53	20	600.251	SCREW M20x60 DIN 931	
54	20	600.717	NUT M20 DIN 980	
55	4	600.148	SCREW M10x30 DIN 933	
56	4	600.587	WASHER $\varnothing 31-56 \times 4$ DIN 125A	
57	4	600.586	SPRING PIN $\varnothing 10 \times 60$ DIN 1481	
58	64	630.483	SCREW M6x20 similar to DIN 7991	
59	80	600.472	NUT M6 DIN 980	
60	32	630.136	SCREW M8x25 similar to DIN 7991	
61	64	600.076	NUT M8 DIN 980	
62	32	600.702	SCREW M8x25 DIN 933	
63	32	600.115	WASHER $\varnothing 8,4$ DIN 125A	
64	16	630.003	SCREW M6x20 DIN 933	
65	28	600.135	WASHER $\varnothing 6,6-18 \times 2$ UNI 6593	
66	4	600.124	GREASE NIPPLE M6	

TABLE PART NO 920.295/c

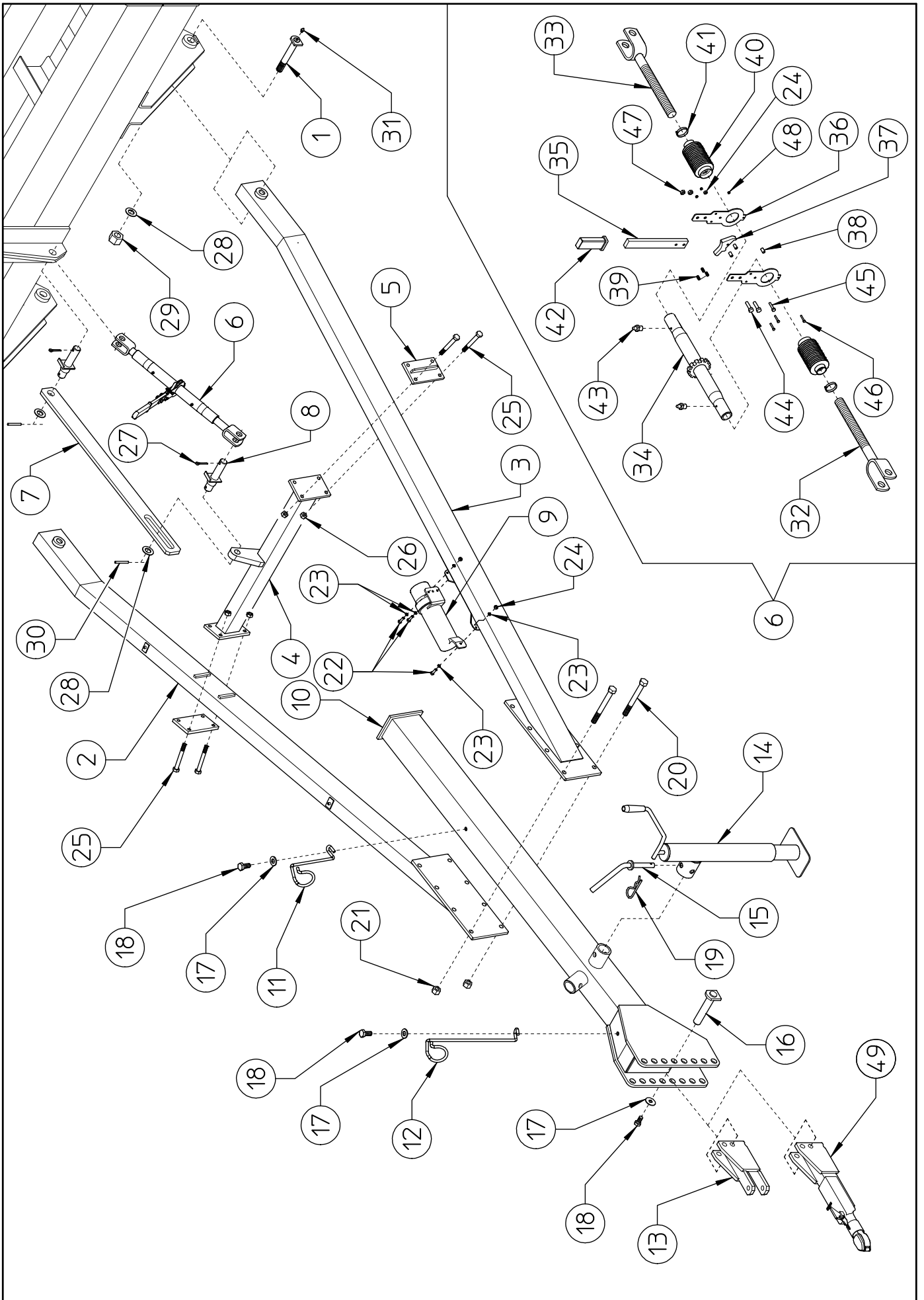


TABLE PART NO 920.295/c				
ITEM	PART NO	Q.ty	DESCRIPTION	NOTE
1	230.605	2	PIN ø30	
2	230.601	1	RH DRAWBAR	
3	230.602	1	LH DRAWBAR	
4	250.012	1	SUPPORT	
5	250.013	2	COUNTERPLATE	
6	230.628	1	RATCHET LINK	
7	230.608	1	TIE ROD	
8	230.606	2	PIN ø25	
9	230.457	1	CANISTER	
10	230.566	1	FRONT DRAWBAR	
11	230.573	1	REAR HOSE SUPPORT	
12	230.574	1	FRONT HOSE SUPPORT	
13	250.271	1	TRACTOR HITCH	
14	220.166	1	PARKING STAND	
15	200.222	1	PIN	
16	200.828	2	PIN ø25	
17	500.160	4	WASHER ø12-40x4	
18	600.441	4	SCREW M12x25 DIN 933	
19	600.019	1	SPLIT PIN ø3	
20	620.866	8	SCREW M16x145 DIN 931	
21	600.080	8	NUT M16 DIN 980	
22	630.003	3	SCREW M6x20 DIN 933	
23	600.135	6	WASHER ø6,6-18x2 UNI 6593	
24	600.472	4	NUT M6 DIN 980	
25	600.003	8	SCREW M14x100 DIN 931	
26	600.075	8	NUT M14 DIN 980	
27	600.038	2	SPLIT PIN ø6x35 DIN 94	
28	600.336	4	WASHER ø25 DIN 125A	
29	620.255	2	NUT M24 DIN 980	
30	600.108	2	SPRING PIN ø8x40 DIN 1481	
31	600.034	2	GREASE NIPPLE M8	
32	220.219	1	RH TIEROD	
33	220.220	1	LH TIEROD	
34	220.218	1	TIE ROD	
35	220.213	1	LEVER	
36	220.205	2	SUPPORT	
37	220.070	1	HOOK	
38	220.215	3	SPACER	
39	220.073	1	SPRING	
40	220.192	2	RUBBER PROTECTION	
41	610.507	2	CLAMP ø25-40x9	
42	610.811	1	HANDLE	
43	600.124	2	GREASE NIPPLE M6	
44	600.702	2	SCREW M8x25 DIN 933	
45	600.202	1	SCREW M6x25 DIN 933	
46	610.717	3	SCREW M4x25 DIN 933	
47	600.076	2	NUT M8 DIN 980	
48	610.718	3	NUT M4 DIN 982	
49	250.834	1	BALL HITCH ø2 5/16"	OPTIONAL

TABLE PART NO 920.407

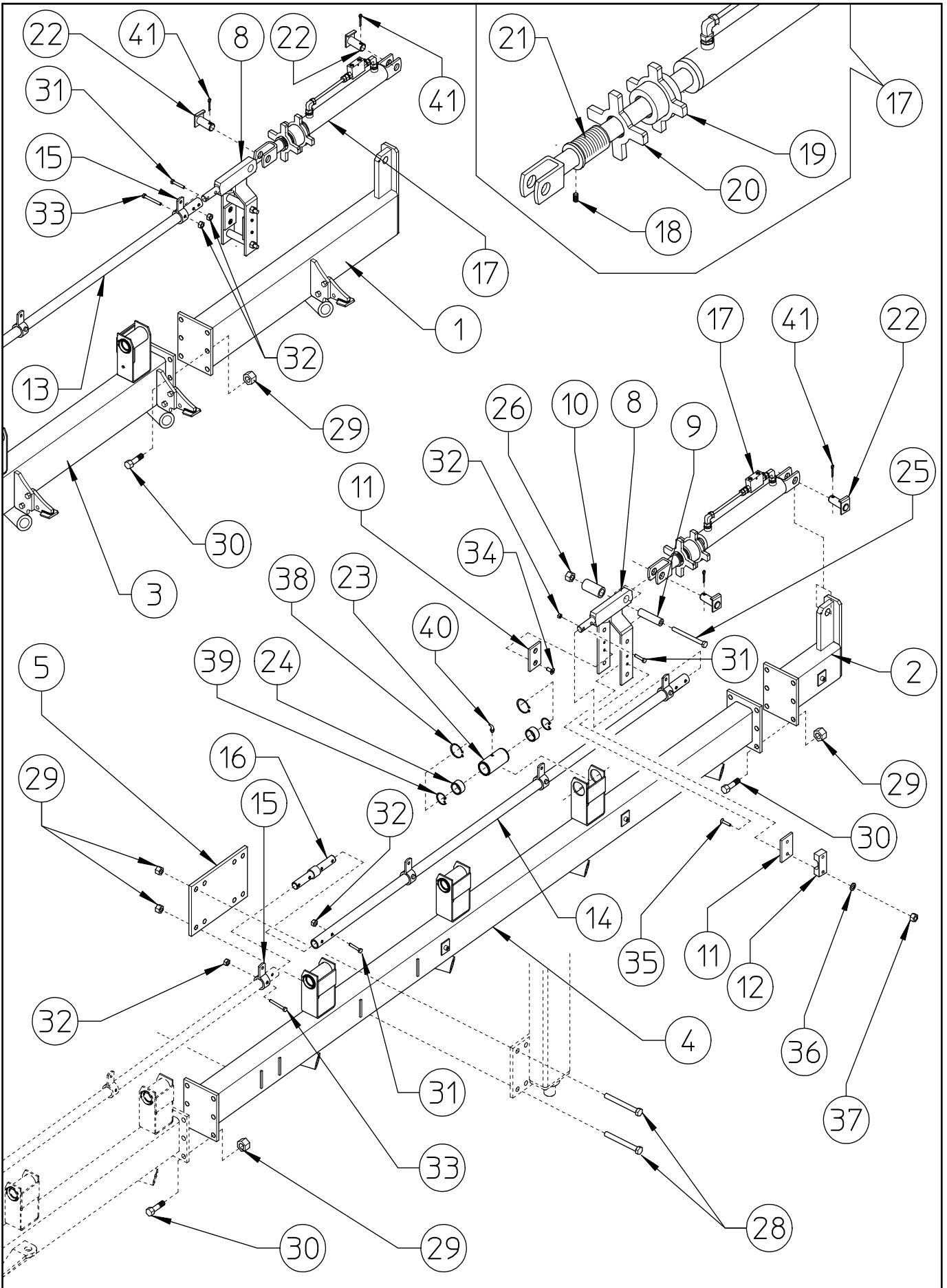


TABLE PART NO 920.407				
ITEM	PART NO	Q.ty	DESCRIPTION	NOTE
1	250.020	1	RH SUPPORT	WITH LOCK
2	230.572	1	LH SUPPORT	
3	250.021	1	RH SECTION	WITH LOCK
4	250.022	1	LH SECTION	WITH LOCK
5	230.977	2	COUNTERPLATE	
6			DELETED	
7			DELETED	
8	230.585	2	SUPPORT	
9	230.607	4	SPACER	
10	230.613	2	BUSH	
11	210.858	4	SLIDING	
12	230.623	2	HOSE SUPPORT	
13	230.588	1	RH PIPE (L.2960-116,54")	
14	230.589	1	LH PIPE (L.2220-87,4")	
15	230.592	9	BUSH	
16	230.586	2	PIN ø22-35	
17	230.794	2	CYLINDER WITH BUSHING AND VALVE	
18	600.583	2	SCREW M6x10 DIN 914	
19	230.583	2	BUSH M40x1,5	
20	230.582	2	LOCK M40x1,5	
21	230.581	2	SCREW M40x1,5	
22	230.368	4	PIN ø25	
23	220.343	7	BUSH	
24	220.342	14	NYLON BUSH	
25	600.001	4	SCREW M12x140 DIN 931	
26	600.077	4	NUT M12 DIN 980	
27			DELETED	
28	610.698	8	SCREW M16x130 DIN 931	
29	600.080	32	NUT M16 DIN 980	
30	610.167	24	SCREW M16x45 DIN 933	
31	600.551	10	SCREW M8x45 DIN 931	
32	600.076	19	NUT M8 DIN 980	
33	610.525	9	SCREW M8x60 DIN 933	
34	610.663	4	SCREW M8x16 similar to DIN 7991	
35	630.489	4	SCREW M8x45 similar to DIN 7991	
36	600.229	4	SPRING WASHER ø8,4 DIN 125A	
37	600.037	4	NUT M8 DIN 934	
38	610.833	14	SNAP RING E50 DIN 471	
39	610.898	14	RING SB 44	
40	600.968	7	GREASE NIPPLE M6-45°	
41	600.038	4	SPLIT PIN ø6x35 DIN 94	

TABLE PART NO 920.335

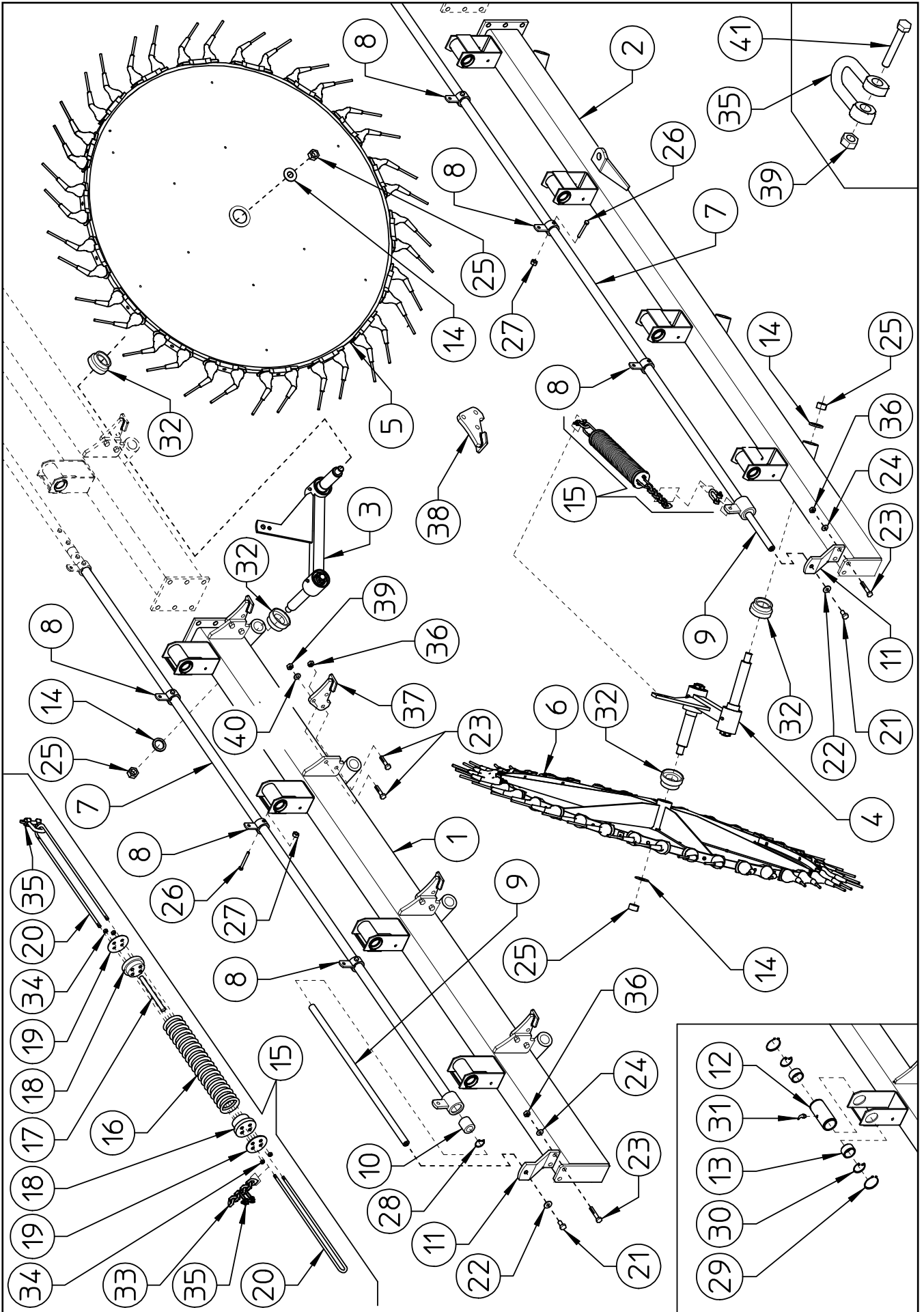


TABLE PART NO 920.335				
ITEM	PART NO	Q.ty	DESCRIPTION	Note
1	250.023	1	RH SECTION	WITH LOCK
2	250.024	1	LH SECTION	WITH LOCK
3	230.540	9	RH ARM, ASSY	
4	230.541	8	LH ARM, ASSY	
5	230.543	9	RH FINGER WHEEL, ASSY	
6	230.544	8	LH FINGER WHEEL, ASSY	
7	230.587	2	PIPE (L.3040-119,68")	
8	230.592	6	BUSH	
9	230.590	2	ROD ø20	
10	230.591	2	BUSH ø35	
11	230.831	2	FRONT SUPPORT	
12	220.343	8	BUSH	
13	220.342	16	NYLON BUSH	
14	200.165	34	WASHER ø23-50x4	
15	230.738	17	SPRING, ASSY	
16	230.739	17	SPRING	
17	230.743	17	RUBBER SPRING	
18	230.742	34	NYLON BUSH	
19	230.741	34	PLATE	
20	230.740	34	TIE ROD	
21	600.770	2	SCREW M12x20 DIN 933	
22	600.018	2	SPRING WASHER ø13 DIN 125A	
23	600.641	38	SCREW M10x35 DIN 933	
24	600.322	4	WASHER ø10.5 DIN 125A	
25	600.079	34	NUT M22 DIN 980	
26	610.525	6	SCREW M8x60 DIN 931	
27	600.076	6	NUT M8 DIN 980	
28	630.453	2	SNAP RING I35 DIN 472	
29	610.833	16	SNAP RING E50 DIN 471	
30	610.898	16	RING SB 44	
31	600.968	8	GREASE NIPPLE M6-45°	
32	230.550	34	PROTECTION	
33	200.749	17	CHAINE (L.196-7,72")	
34	600.472	68	NUT M6 DIN 980	
35	630.927	34	"D" SHACKLE	
36	600.029	21	NUT M10 DIN 980	
37	250.010	9	RH LOCK	
38	250.011	8	LH LOCK	
39	600.010	51	NUT M10 DIN 934	
40	600.024	17	SPRING WASHER ø10.5 SIMILAR TO 127B	
41	600.404	34	SCREW M10x50 DIN 931	

TABLE PART NO 920.298

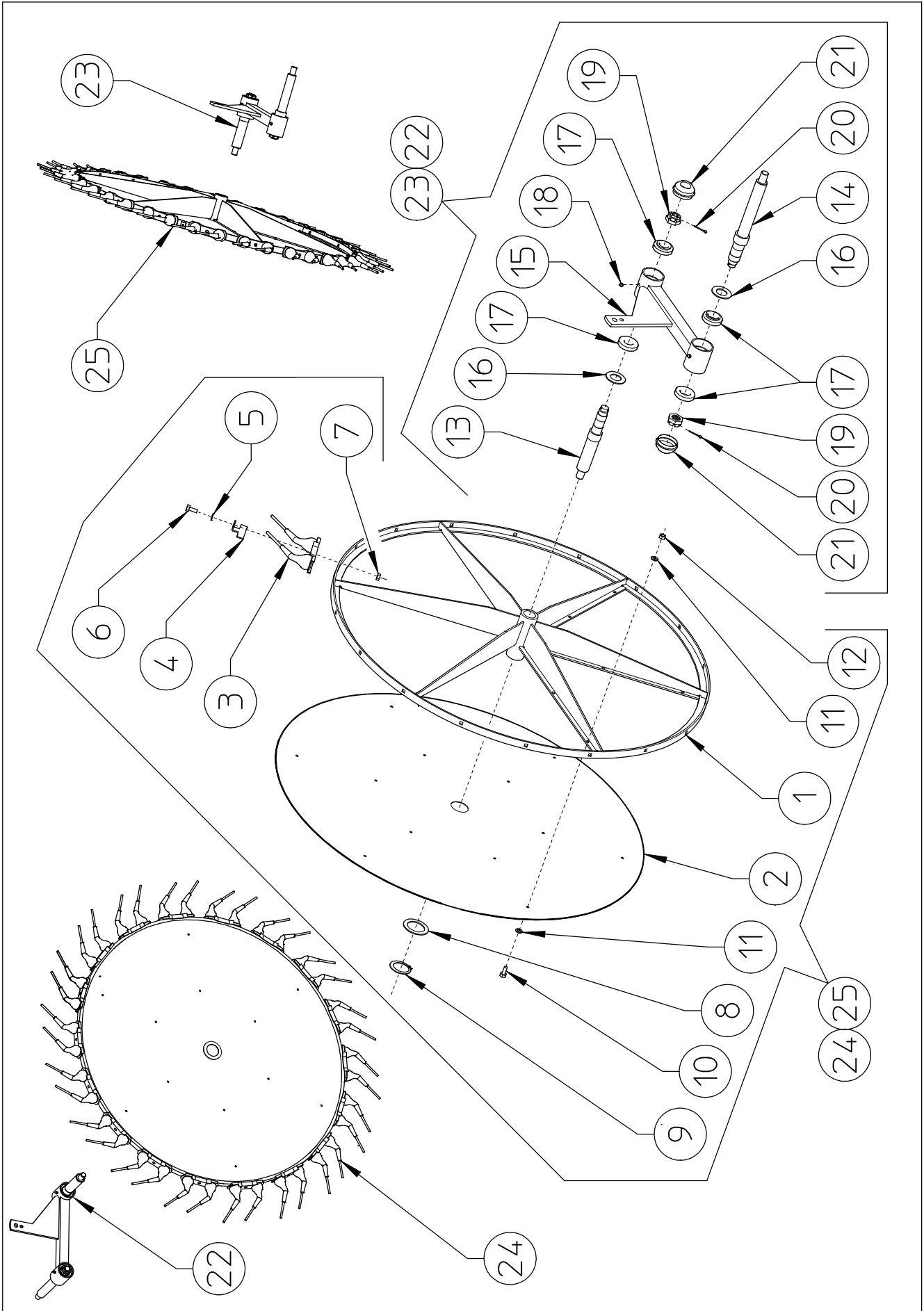


TABLE PART NO 920.298				
ITEM	PART NO	Q.ty	DESCRIPTION	NOTE
1	230.545	17	RIM	
2	230.508	17	FLANGE	
3	230.466	306	TINE	
4	230.548	102	LOCK	
5	600.322	306	WASHER ø10.5 DIN 433	
6	600.006	306	SCREW M10x25 DIN 933	
7	600.029	306	NUT M10 DIN 980	
8	230.549	17	WASHER ø80-56x3	
9	600.908	17	SNAP RING E55 DIN 471	
10	630.003	204	SCREW M6x20 DIN 933	
11	600.135	408	WASHER ø6,6 UNI 6593	
12	600.472	204	NUT M6 DIN 980	
13	230.547	17	PIN ø35 L.275-10,83"	
14	230.546	17	PIN ø35 L.310-12,2"	
15	230.542	17	ARM	
16	610.960	34	DUST COVER	
17	610.935	68	BEARING 32007X	
18	600.124	34	GREASE NIPPLE M6	
19	600.288	34	LOCK NUT M27x1,5	
20	600.291	34	SPLIT PIN ø4x40 DIN 94	
21	600.290	34	CAP	
22	230.540	9	RH ARM, ASSY	
23	230.541	8	LH ARM, ASSY	
24	230.543	9	RH FINGER WHEEL, ASSY	
25	230.544	8	LH FINGER WHEEL, ASSY	

TABLE PART NO 920.408

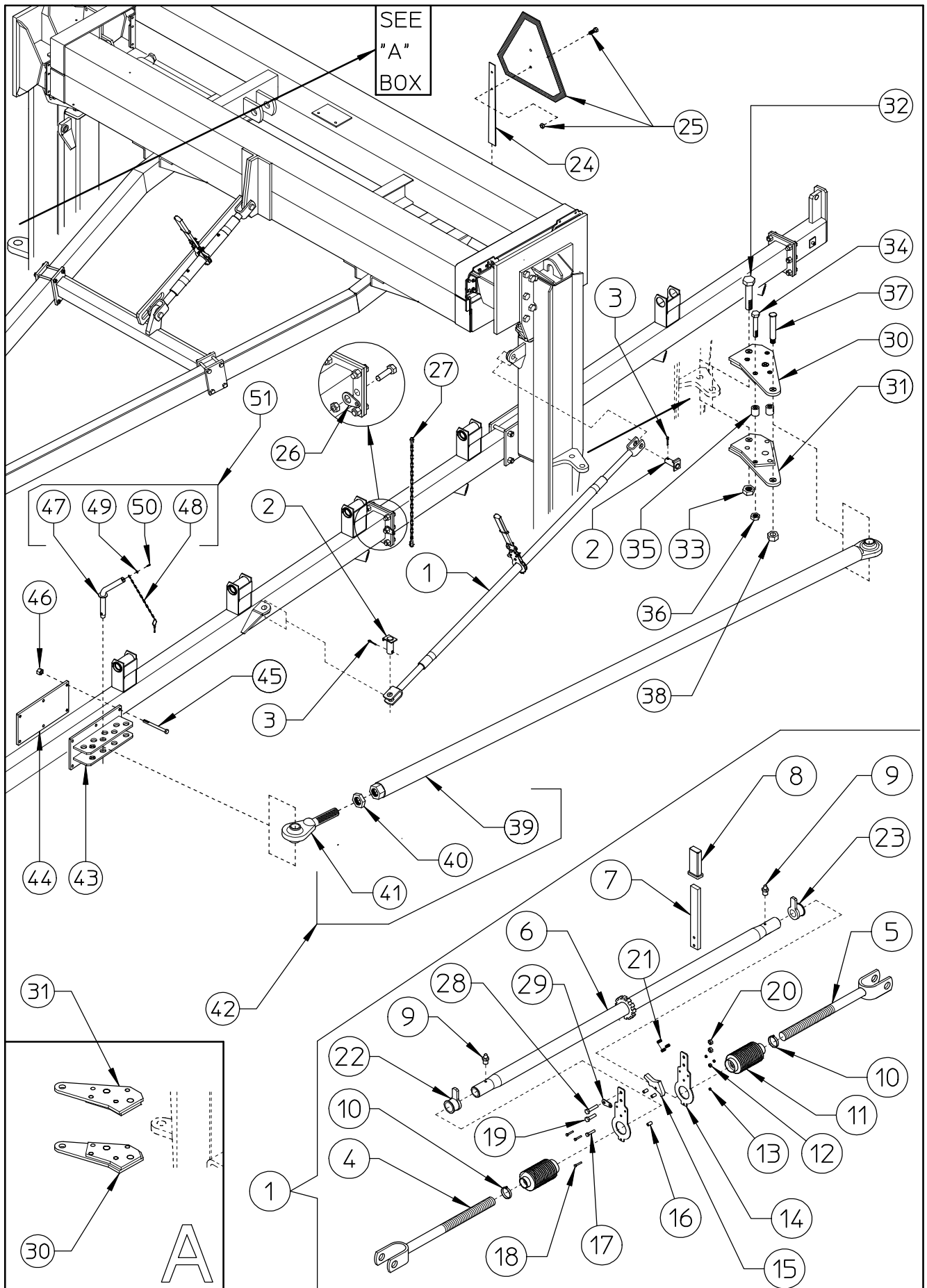


TABLE PART NO 920.408				
ITEM	PART NO	Q.ty	DESCRIPTION	NOTE
1	230.609	2	RATCHET LINK	
2	230.368	4	PIN ø25	
3	600.038	4	SPLIT PIN ø6x35 DIN 94	
4	230.610	2	RH TIEROD	
5	230.611	2	LH TIEROD	
6	220.182	2	TIE ROD	
7	220.213	2	LEVER	
8	610.811	2	HANDLE	
9	600.124	4	GREASE NIPPLE M6	
10	610.507	4	CLAMP ø25-40x9	
11	220.192	4	RUBBER PROTECTION	
12	600.472	2	NUT M6 DIN 980	
13	610.718	6	NUT M4 DIN 982	
14	220.205	4	SUPPORT	
15	220.070	2	HOOK	
16	220.215	6	SPACER	
17	600.202	2	SCREW M6x25 DIN 933	
18	610.717	6	SCREW M4x25 DIN 933	
19	600.702	4	SCREW M8x25 DIN 933	
20	600.076	4	NUT M8 DIN 980	
21	220.073	2	SPRING	
22	220.201	2	LOCKING BUSH RH	
23	220.202	2	LOCKING BUSH LH	
24	220.413	1	SPADE	
25	220.414	1	SMV EMBLEME WITH ACCESS.	
26	250.009	2	SUPPORT	

TABLE PART NO 920.408

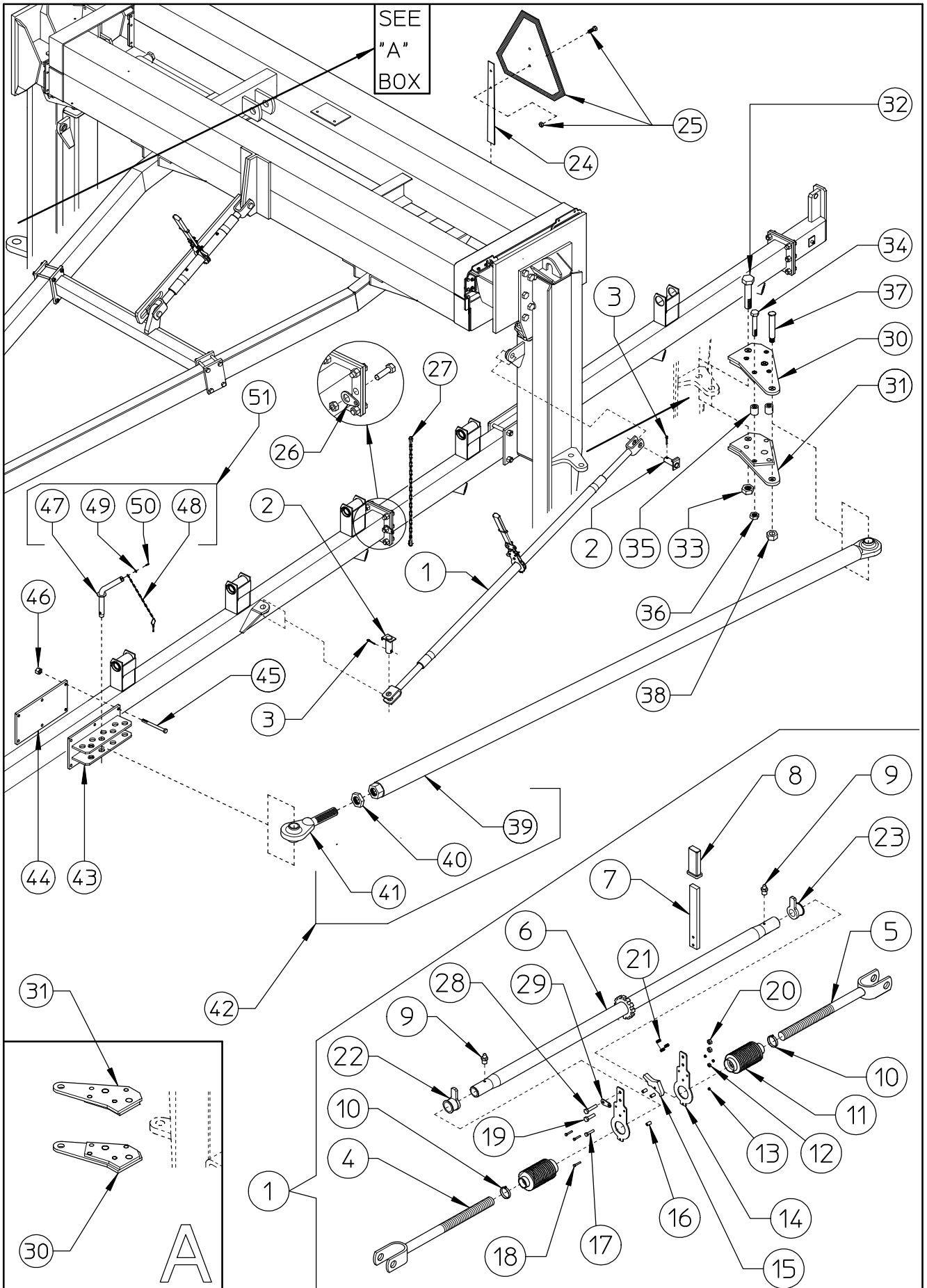


TABLE PART NO 920.408				
ITEM	PART NO	Q.ty	DESCRIPTION	NOTE
27	630.929	2	CHAINE	
28	600.757	2	SCREW M8x30 DIN 933	
29	250.026	2	SUPPORT	
30	250.815	2	SUPPORT	
31	250.816	2	SUPPORT	
32	640.182	4	SCREW M24x100 DIN 931	
33	620.255	4	NUT M24 DIN 980	
34	610.872	8	SCREW M16x90 DIN 931	
35	250.824	4	SPACER \varnothing 17/30 L. 25	
36	600.080	8	NUT M16 DIN 980	
37	250.818	2	PIN \varnothing 25	
38	600.717	2	NUT M20 DIN 980	
39	250.820	2	TIE ROD	
40	610.813	2	NUT M30 DIN 936	
41	220.223	2	HEAD \varnothing 30	
42	250.819	2	TIE ROD, ASSY	
43	250.814	2	SUPPORT	
44	250.813	2	COUNTERPLATE	
45	600.225	12	SCREW M12x120 DIN 931	
46	600.077	12	NUT M12 DIN 980	
47	250.817	2	PIN \varnothing 30	
48	250.822	2	CHAINE WITH CLIP	
49	600.514	2	WASHER \varnothing 6,4	
50	600.668	2	SCREW M6x12 DIN 933	
51	250.821	2	PIN \varnothing 30 WITH LOCK	

TABLE PART NO 920.409

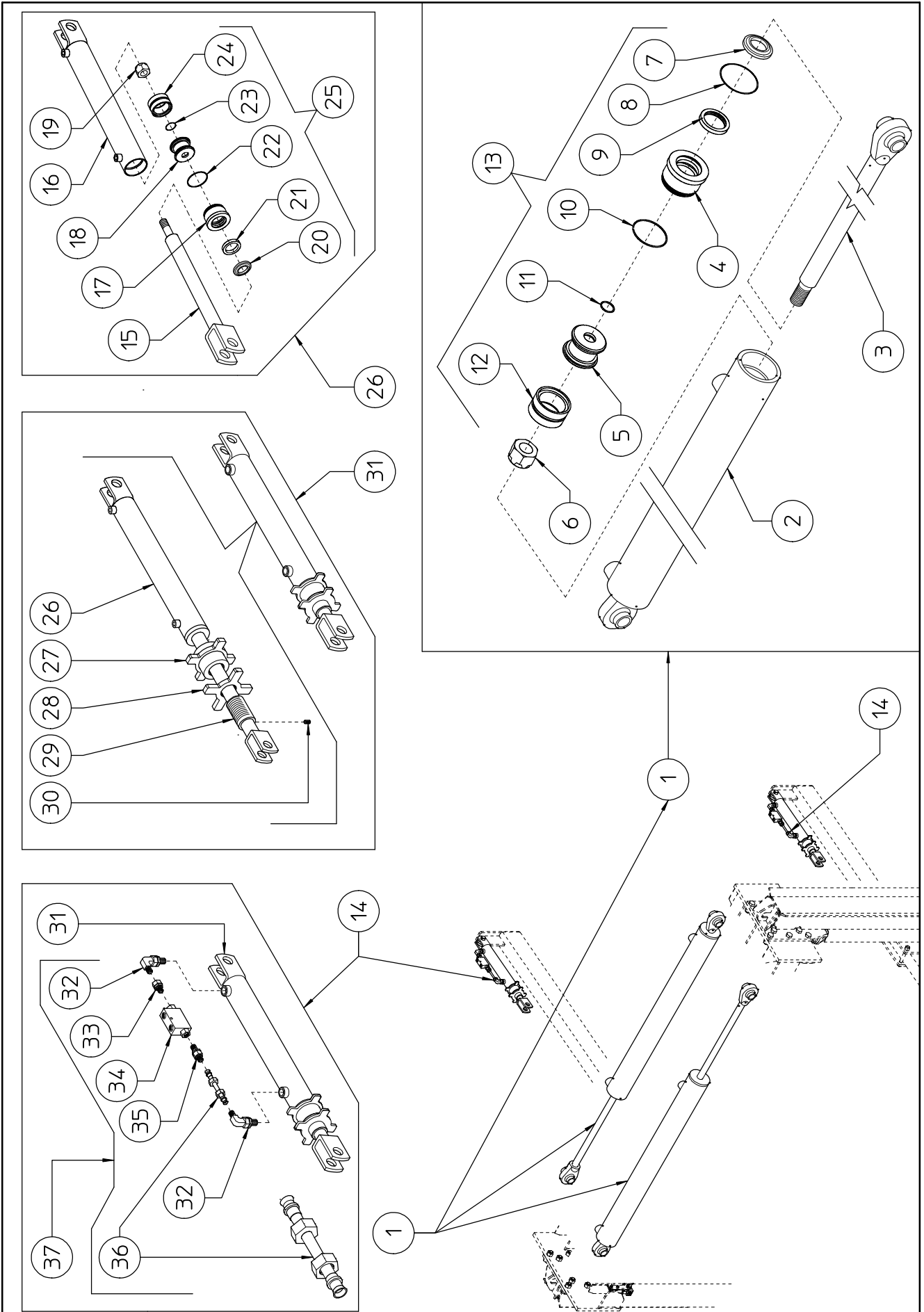


TABLE PART NO 920.409

ITEM	PART NO	Q.ty	DESCRIPTION	NOTE
1	230.559	2	CYLINDER ø90-40x1225	
2	230.631	2	CYLINDER BARREL ø90	(one for cylinder)
3	230.632	2	ROD ø40	(one for cylinder)
4	230.634	2	CYLINDER HEAD ø90-40	(one for cylinder)
5	230.635	2	PISTON ø90	(one for cylinder)
6	610.005	2	NUT M27x2 DIN 982	(one for cylinder)
7	610.600	2	GASKET WRM 157188 or equivalent (rod ø40)	(one for cylinder)
8	630.681	2	OR GASKET ø82,22x2,62	(one for cylinder)
9	610.599	2	GASKET 196157 or equivalent (rod ø40)	(one for cylinder)
10	630.680	2	GASKET GDS 620 or OR GASKET ø79,77x5,34	(one for cylinder)
11	610.009	2	OR GASKET ø26,58x3,53	(one for cylinder)
12	630.492	2	GASKET DBM 354275 or equivalent (ø90)	(one for cylinder)
13	630.491	2	SET OF GASKET	(one for cylinder)
14	230.794	2	CYLINDER ø50-30 WITH BUSHING AND VALVE	
15	210.221	2	ROD ø30	(one for cylinder)
16	210.222	2	CYLINDER BARREL ø50	(one for cylinder)
17	220.524	2	CYLINDER HEAD ø50-30	(one for cylinder)
18	200.304	2	PISTON ø50	(one for cylinder)
19	600.642	2	NUT M18x1,5 DIN 982	(one for cylinder)
20	600.645	2	GASKET WRM 118149 or equivalent (rod ø30)	(one for cylinder)
21	610.031	2	GASKET B157118/1 or equivalent (rod ø30)	(one for cylinder)
22	610.090	2	OR GASKET ø42,86x3,53	(one for cylinder)
23	600.646	2	OR GASKET ø20.29x2,62	(one for cylinder)
24	600.648	2	GASKET DBM 196133 or equivalent (ø50)	(one for cylinder)
25	620.022	2	SET OF GASKET ø50-30	(one for cylinder)
26	210.816	2	CYLINDER ø50-30 WITHOUT BUSHING	
27	230.583	2	BUSH M40x1,5	(one for cylinder)
28	230.582	2	LOCK M40x1,5	(one for cylinder)
29	230.581	2	SCREW M40x1,5	(one for cylinder)
30	600.583	2	SCREW M6x10 DIN 914	(one for cylinder)
31	230.584	2	CYLINDER ø50-30 WITH BUSHING	
32	630.639	4	FITTING 90° 3/8" - 3/4" 16 UNF JIC 37°	(2 for cylinder)
33	630.633	2	FITTING 3/8" - 3/4" 16 UNF JIC 37°	(one for cylinder)
34	600.799	2	LOCK VALVE 3/8"	(one for cylinder)
35	630.638	2	FITTING 3/8" - 3/4" 16 UNF JIC 37°	(one for cylinder)
36	230.795	2	TUBE ø12 WITH NUT AND BUSH	(one for cylinder)
37	230.791	2	VALVE AND FITTING KIT	(one for cylinder)

TABLE PART NO 920.410

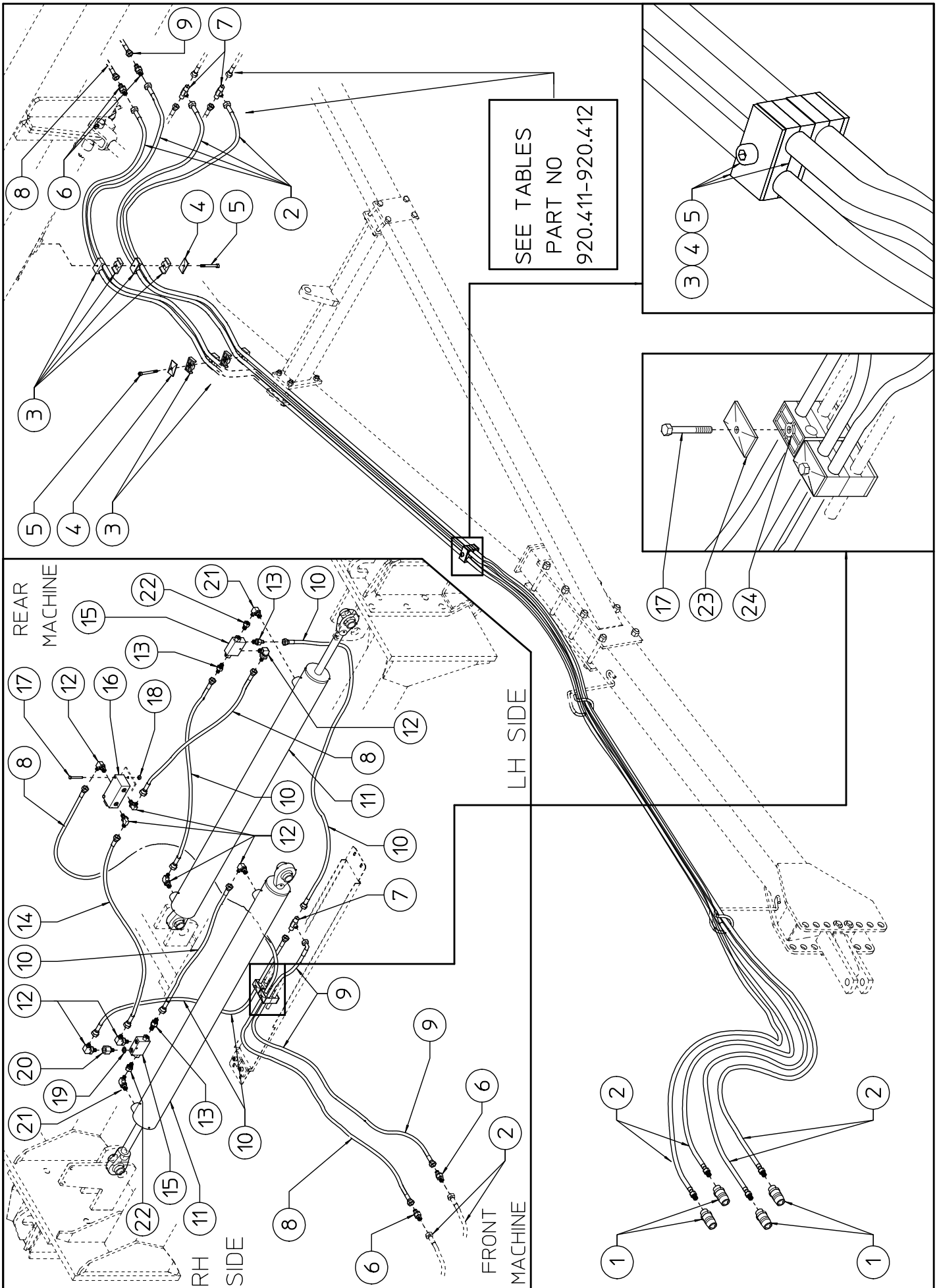
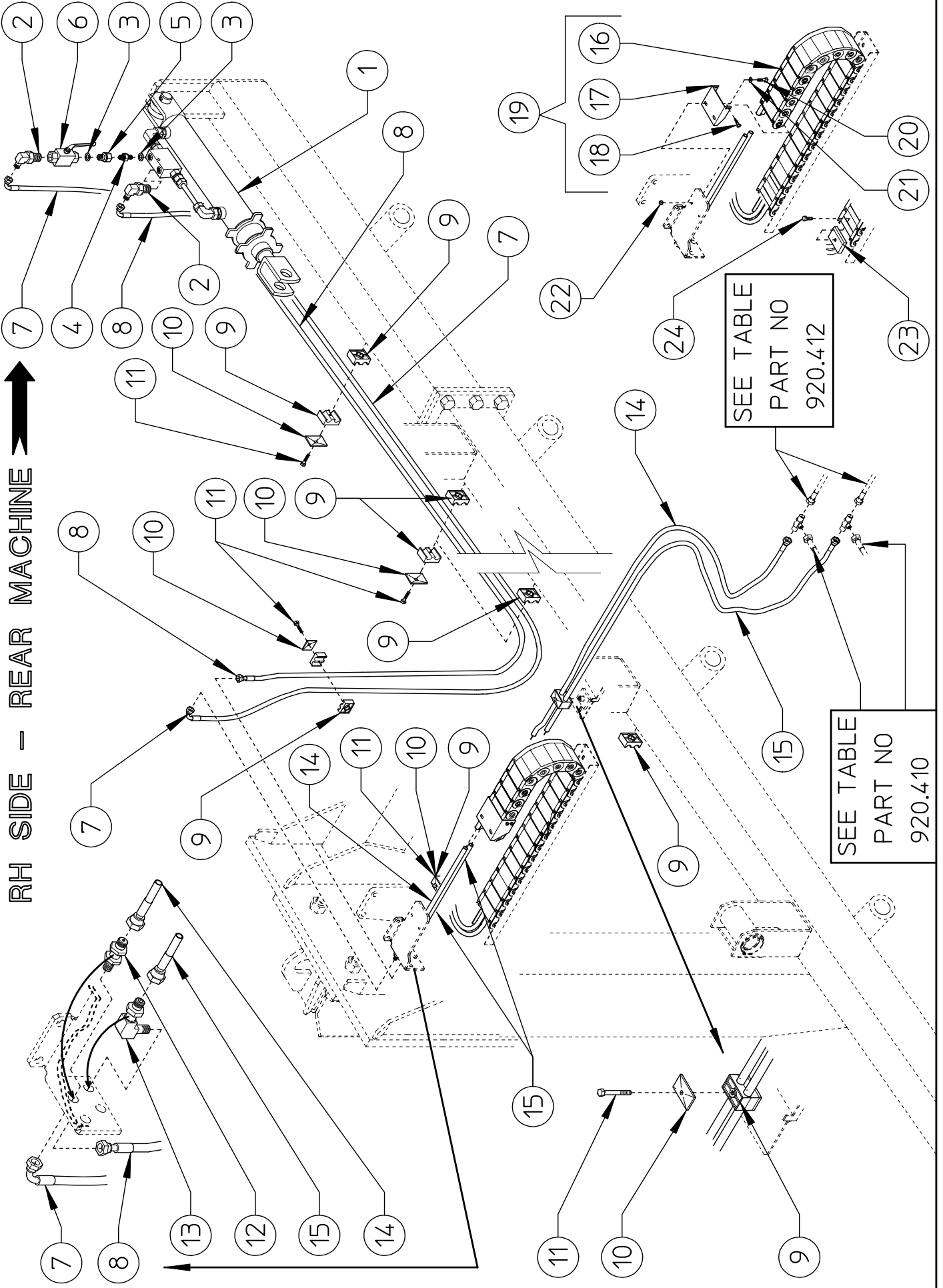


TABLE PART NO 920.410				
ITEM	PART NO	Q.ty	DESCRIPTION	NOTE
1	620.329	4	RAPID COUPLING 1/2" NPT	
2	640.183	4	HOSE 3/8" L.7500-295,30" - 1/2 NPT MALE - 1/2 JIC 37° FEMALE 90°	
3	610.162	12	COLLAR ø18	
4	610.164	3	CLAMP	
5	600.735	3	SCREW M8x65 DIN 931	
6	640.184	2	NIPPLES 1/2 JIC 37°	
7	630.675	3	FITTING 3/8" GAS-1/2 JIC 37°	
8	630.669	2	HOSE 1/4" L.900 - 35,43" FEMALE 1/2 JIC 37°	
9	630.670	1	HOSE 1/4" L.700 - 27,56" FEMALE 1/2 JIC 37° - FEMALE 90° 1/2 JIC 37°	
10	630.671	4	HOSE 1/4" L.1100 - 43,31" FEMALE 1/2 JIC 37°	
11	230.559	2	CILYNDER ø90-40x1225	
12	630.678	8	FITTING 90° 3/8" GAS-1/2 JIC 37°	
13	630.675	3	FITTING 3/8" GAS-1/2 JIC 37°	
14	630.912	1	HOSE 1/4" L.1040 - 40,94" FEMALE 1/2 JIC 37°	
15	600.799	2	LOCK VALVE 3/8"	
16	600.974	1	FLOW DIVIDER 3/8"	
17	600.970	4	SCREW M6x60 DIN 931	
18	600.472	2	NUT M6 DIN 980	
19	620.452	1	WASHER 3/8"	
20	630.924	1	FITTING MALE 3/8" FEMALE 3/8"	
21	630.639	2	FITTING 90° 3/8" GAS-3/4-16 UNF	
22	630.633	2	FITTING 3/8" GAS-3/4-16 UNF	
23	610.802	2	CLAMP	
24	630.078	8	DOUBLE COLLAR ø12	

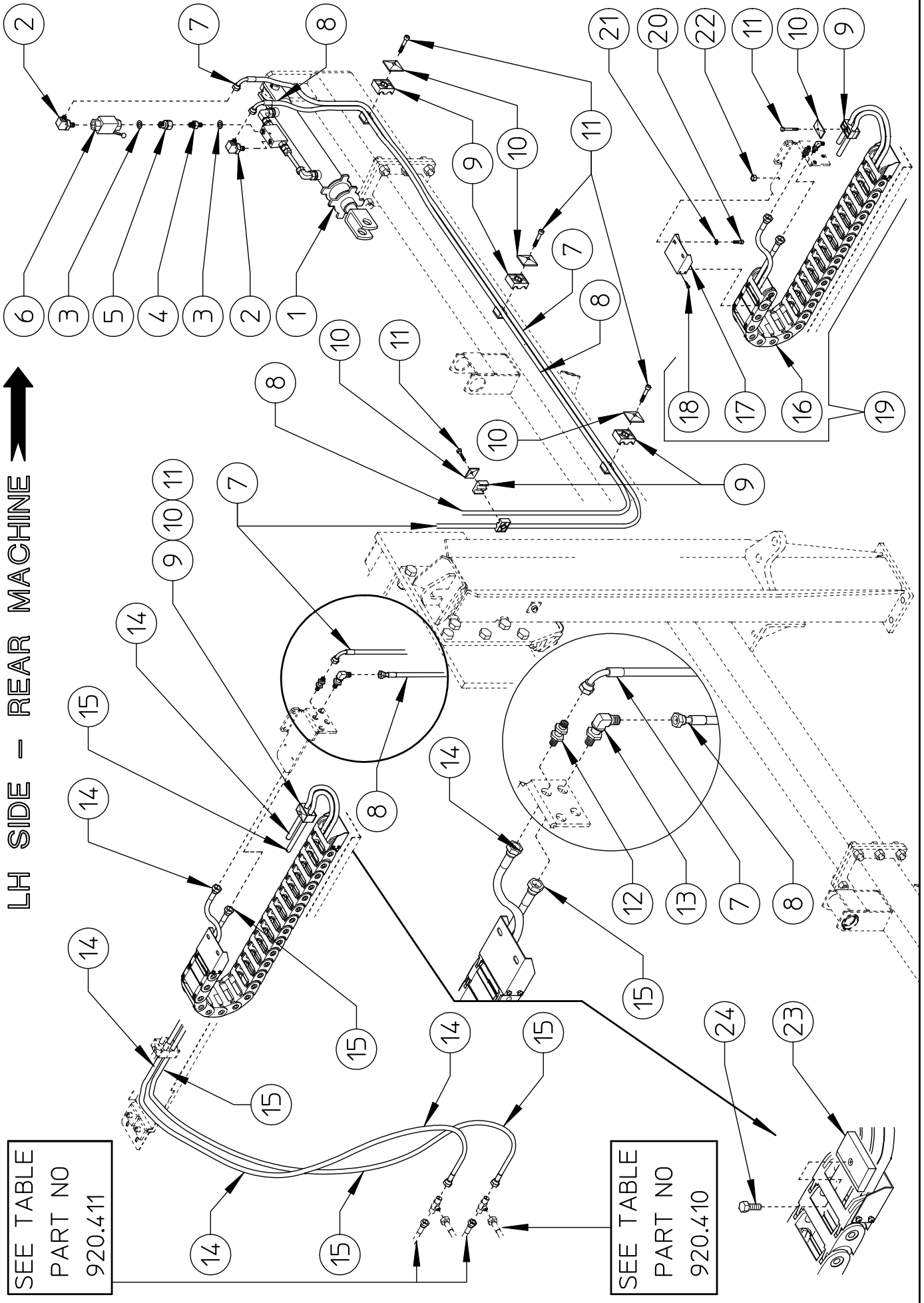
TABLE PART NO 920.411



RH SIDE - REAR MACHINE

TABLE PART NO 920.411				
ITEM	PART NO	Q.ty	DESCRIPTION	NOTE
1	230.794	1	CYLINDER ø50-30 WITH ACCESORIES AND VALVE	
2	630.678	2	FITTING 90° 3/8" GAS -1/2" JIC 37°	
3	620.452	2	WASHER 3/8"	
4	600.270	1	NIPPLES 3/8" GAS - 3/8" GAS	
5	600.271	1	FITTING MALE 3/8" GAS - FEMALE 3/8" GAS	
6	610.002	1	VALVE 3/8" GAS	
7	630.665	1	HOSE 1/4" L.4320 - 170" FEMALE 90° 1/2 JIC 37°	
8	630.666	1	HOSE 1/4" L.4220-166,14" FEMALE 1/2 JIC 37°-FEMALE 90° 1/2 JIC 37°	
9	630.078	16	DOUBLE COLLAR ø12	
10	610.802	8	CLAMP	
11	610.803	8	SCREW M6x35 DIN 931	
12	630.676	1	FITTING 1/2 JIC 37°	
13	630.677	1	FITTING 90° 1/2 JIC 37°	
14	630.667	1	HOSE 1/4" L.3080 - 121,26" FEMALE 1/2 JIC 37°	
15	630.668	1	HOSE 1/4" L.3060 - 120,47" FEMALE 1/2 JIC 37°	
16	230.594	1	CHAINE SR 305	
17	230.597	2	SUPPORT	
18	630.454	8	SCREW ø3,9 (7P) DIN 7982B	
19	230.596	1	CHAINE, ASSY	
20	630.003	4	SCREW M6x20 DIN 933	
21	600.135	4	WASHER ø6,6-18 UNI 6593	
22	600.472	4	NUT M6 DIN 980	
23	230.617	1	LOCK	
24	600.668	1	SCREW M6x12 DIN 933	

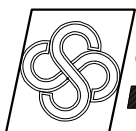
TABLE PART NO 920.412



SEE TABLE
PART NO
920.411

SEE TABLE
PART NO
920.410

TABLE PART NO 920.412				
ITEM	PART NO	Q.ty	DESCRIPTION	NOTE
1	230.794	1	CYLINDER ø50-30 WITH ACCESORIES AND VALVE	
2	630.678	2	FITTING 90° 3/8" GAS -1/2" JIC 37°	
3	620.452	2	WASHER 3/8"	
4	600.270	1	NIPPLES 3/8" GAS - 3/8" GAS	
5	600.271	1	FITTING MALE 3/8" GAS - FEMALE 3/8" GAS	
6	610.002	1	VALVE 3/8" GAS	
7	630.661	1	HOSE 1/4" L.3600 - 141,73" FEMALE 90° 1/2 JIC 37°	
8	630.662	1	HOSE 1/4" L.3520-138,58" FEMALE 1/2 JIC 37°-FEMALE 90° 1/2 JIC 37°	
9	630.078	14	DOUBLE COLLAR ø12	
10	610.802	7	CLAMP	
11	610.803	7	SCREW M6x35 DIN 931	
12	630.676	1	FITTING 1/2 JIC 37°	
13	630.677	1	FITTING 90° 1/2 JIC 37°	
14	630.663	1	HOSE 1/4" L.3820 - 150,39" FEMALE 1/2 JIC 37°	
15	630.664	1	HOSE 1/4" L.3790 - 149,22" FEMALE 1/2 JIC 37°	
16	230.594	1	CHAINE SR 305	
17	230.597	2	SUPPORT	
18	630.454	8	SCREW ø3,9 (7P) DIN 7982B	
19	230.596	1	CHAINE, ASSY	
20	630.003	4	SCREW M6x20 DIN 933	
21	600.135	4	WASHER ø6,6-18 UNI 6593	
22	600.472	4	NUT M6 DIN 980	
23	230.617	1	LOCK	
24	600.668	1	SCREW M6x12 DIN 933	



AGRICULTURAL MACHINERY
sitrex® SpA .

Zona Industriale-Viale Grecia, 8
06018 TRESTINA-(Perugia)-ITALY
Tel. +39.075.8540021-Telefax +39.075.8540523
e-mail: sitrex@sitrex.it www.sitrex.com

